



CABLAIR hoses**Super-light flexible PVC-hose**

Cablaire is made of high-strength, high performance PVC compound. The Cablaire hose weighs 30-50% less and is much softer and more flexible than conventional PVC hoses. This ensures complete freedom of movement for operators of pneumatic hand tools in any working environment.

- Low weight.
- Extremely soft and flexible.
- Silicone free.
- Ergonomic.
- Working temperature -25°C to +60°C.



Model	Hose inside dia		Hose outside dia mm	Max working pressure ^a bar	Max rec. air flow ^b l/s	Weight per 30 m coil kg	Ordering No.
	mm	in					
CABLAIR 06	6.3	1/4	9	18	4	1.2	9093 0035 11
CABLAIR 08	8	5/16	10.5	18	7.5	1.7	9093 0035 41
CABLAIR 10	10	3/8	13	14	13	2.1	9093 0035 71
CABLAIR 13	12.5	1/2	16.5	13	21	3.0	9093 0036 01
CABLAIR 16	16	5/8	21	11	43	5.4	9093 0036 31
CABLAIR 20	19	3/4	24	11	75	5.8	9093 0036 61
CABLAIR 25	25	1	31	10	125	10.4	9093 0036 91

^a With a safety factor of 3 at 20°C (at the max temp of +60°C the working pressure should be reduced by 50%).

^b The pressure drop will be 0.2 bar on a hose length of 5 m.

CABLAIR ESD**Extra flexible antistatic air hose**

Cablaire ESD is designed specifically for use within the computer manufacturing industry. The hose possesses properties which enable ESDS (electrostatic sensitive devices) to be handled in a protected area with a low risk level, as a result of electrostatic discharge. In addition to a known demand in the computer industry, it is expected that potential exists in the electronics, radio and communication fields. The connection device must be earthed/grounded.

- Extra flexible.
- Antistatic.
- Silicone free.
- Testing in accordance with BS2050:1978 (1998) 4.12.
- Working temperature -15°C to +60°C.



Model	Hose inside dia		Hose outside dia		Max working pressure ^a bar	Max rec. air flow l/s	Weight per 30 m coil kg	Ordering No.
	mm	in	mm	in				
CABLAIR ESD 06	6	1/4	11	7/16	10	4	2.34	8202 0501 06
CABLAIR ESD 08	8	5/16	12	1/2	9	7.5	2.56	8202 0501 08
CABLAIR ESD 10	10	3/8	14	9/16	8	13	2.71	8202 0501 10
CABLAIR ESD 13	13	1/2	18	23/32	7	21	4.41	8202 0501 13

^a With a safety factor of 3 at 20°C (at the max temp of +60°C the working pressure should be reduced by 50%).

PVC hoses

Strong PVC hose for heavy-duty applications

PVC hose has high resistance to abrasion, which makes it the ideal hose for tough working environments such as workshops, factories, garages, etc. It is mainly recommended for indoor use.

- Long service life.
- Pliable.
- Transparent.
- Working temperature -25°C to +60°C.



Model	Hose inside dia		Hose outside dia mm	Max working pressure ^a bar	Max rec. air flow ^b l/s	Weight per 30 m coil kg	Ordering No.
	mm	in					
PVC 03	3.2	1/8	7	20	0.7	1.4	9093 0037 21
PVC 05 ^c	5	3/16	9	18	2.1	1.9	9093 0037 51
PVC 06 ^d	6.3	1/4	11	18	4	2.5	9093 0037 81
PVC 08	8	5/16	12	18	7.5	2.9	9093 0038 11
PVC 10 ^e	10	3/8	14	14	13	3.7	9093 0038 41
PVC 13	12.5	1/2	18	13	21	5.9	9093 0038 71
PVC 16	16	5/8	22	12	43	7.2	9093 0039 01
PVC 20	19	3/4	25	12	75	8.3	9093 0039 31
PVC 25	25	1	32	11	125	12.5	9093 0039 61

^a With a safety factor of 3 at 20°C (at the max temp of +60°C the working pressure should be reduced by 50%).

^b The pressure drop will be 0.2 bar on a hose length of 5 m.

POLUR

High resistant polyurethane hose

Polur hose is the most environmentally friendly solution. It has high resistance to abrasion and it is oil resistant. Polur hose has a much longer lifetime than PVC hoses. Polur is ideal in tough working conditions such as workshops, factories, garages, shipyards and construction sites due to its flexibility, even at minus degrees. Polur is recommended for indoor and outdoor use.

- Oil resistant.
- Flexible.
- Long service life.
- Working temperature -30°C to +80°C.



Model	Hose inside dia		Hose outside dia mm	Max working pressure ^a bar	Max rec. air flow ^b l/s	Weight per 25 m coil kg	Ordering No.
	mm	in					
POLUR 08	8	5/16	12	20	7.5	2.2	8202 0601 08
POLUR 10	10	3/8	14	16	13	2.5	8202 0602 10
POLUR 13	13	1/2	18	13	21	4.0	8202 0603 13

^a With a safety factor of 3 at 20°C (at the max temp of +60°C the working pressure should be reduced by 50%).

^b The pressure drop will be 0.2 bar on a hose length of 5 m, including 2 nipples and at an inlet pressure of 7 bar.

TURBO

Super-light flexible rubber hose

Turbo hose has been developed for flexible use both indoor and outdoor. The hose weighs 30-40% less than conventional rubber hoses, making it ideal for foundries, shipyards, engineering workshops and construction sites. Turbo hose is oil resistant.

- Extremely low weight.
- Soft and flexible.
- Antistatic.
- Grinding and welding spatter resistant.
- Working temperature -40°C to +90°C.



Model	Hose inside dia		Hose outside dia mm	Max working pressure ^a bar	Max rec. air flow ^b l/s	Weight per 20 m coil kg	Ordering No.
	mm	in					
TURBO 13	12.5	1/2	18.6	16	21	3.9	9093 0057 91
TURBO 16	16.5	5/8	22.5	16	43	4.8	9093 0057 31
TURBO 20	20.1	3/4	26.1	16	75	5.4	9093 0057 61

^a With a safety factor of 4 at 20°C.

^b The pressure drop will be 0.2 bar on a hose length of 5 m, including 2 nipples and at an inlet pressure of 7 bar.

RUBAIR

Durable reinforced heavy duty rubber hose

Rubair hose is double reinforced to fulfil all general heavy duty demands and is recommended for indoor and outdoor use. Rubair hose is oil resistant.

- Durable.
- Antistatic.
- Grinding and welding spatter resistant.
- Working temperature -40°C to +90°C.



Model	Hose inside dia		Hose outside dia mm	Max working pressure ^a bar	Max rec. air flow ^b l/s	Weight per 20 m coil kg	Ordering No.
	mm	in					
RUBAIR 06	6.3	1/4	11.3	16	4	2.0	8202 0401 06
RUBAIR 10	10	3/8	16.0	16	13	3.6	8202 0402 10
RUBAIR 13	12.5	1/2	19.1	16	21	4.7	8202 0403 13
RUBAIR 16	16	5/8	23.0	16	43	6.1	8202 0404 16
RUBAIR 20	20	3/4	26.6	16	75	7.8	8202 0405 20
RUBAIR 25	25	1	34.0	16	125	11.8	8202 0406 25

^a With a safety factor of 5 at 20°C.

^b The pressure drop will be 0.2 bar on a hose length of 5 m, including 2 nipples and at an inlet pressure of 7 bar.

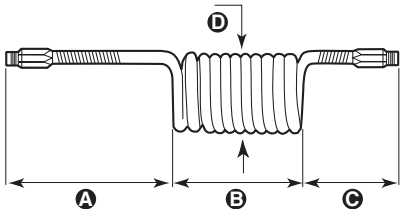
SPI
Elastic hose for vertical and horizontal applications

SPI elastic spiral hose is ideal for air tools used at varying distances from a fixed air outlet. It is easily stretched and retracts immediately when released. When used with hand tools, its self-storage principle ensures that the hose is kept off the floor and out of the way of the operator. The SPI 1 and SPI 2 have ball bearing swivels fitted on the long hose side to allow 360° rotation. All spiral hoses, except the SPI4, are fitted with plastic spring guard. SPI is the ideal hose in combination with a balancer.

- Self-retractable.
- Light and flexible.
- Strong and durable.
- Tubing material: Polyurethane (100% PUR).
- Hardness: Shore A 98 +2.
- Colour: Blue.
- Working pressure: 8 bar at 23°C.
- Burst pressure: 25 bar at 23°C.
- Temperature range: -40°C to +70°C.



Dimensions



Model	Hose inside dia mm	Hose outside dia mm	Max. rec. air flow ^a l/s	Working range m	Length			Max spiral dia (D) mm	Male threads in BSP	Ordering No.
					(A) mm	(B) mm	(C) mm			
SPI 1SPSW-S	6.5	10	7	2	500	165	150	55	1/4	8202 0508 71
SPI 1SPSW-M	6.5	10	5	4	500	330	150	55	1/4	8202 0508 73
SPI 2SPSW-S	8	12	13	2	500	130	150	70	3/8	8202 0508 75
SPI 2SPSW-M	8	12	10	4	500	270	150	70	3/8	8202 0508 77
SPI 2SPSW-L	8	12	9	6	500	435	150	70	3/8	8202 0508 79
SPI 2SPSW-XL	8	12	6	8	500	600	150	70	3/8	8202 0508 81
SPI 3SP-S	11	16	25	2	500	185	150	98	3/8	8202 0508 82
SPI 3SP-M	11	16	22	4	500	250	150	98	3/8	8202 0508 84
SPI 3SP-L	11	16	17	6	500	390	150	98	3/8	8202 0508 86
SPI 3SP-XL	11	16	13	8	500	550	150	98	3/8	8202 0508 88
SPI 4SP-XXL	13	19	25	10	500	850	500	115	3/8	8202 0508 90

^a At inlet pressure 6 bar and pressure drop 0.5 bar.

Productivity kits boost productivity, extend tool lifetime and ensure minimum pressure drop.

Each productivity kit includes ball valve, air preparation unit, and the couplings, hose and nipples needed for correct and safe installation of the tool.

Just choose the correct productivity kit based on the air flow requirement of the tool and whether the tool needs lubrication or not. You'll be surprised how much the productivity kit improves the performance of the tool.

- Improves the performance of the tool.
- Fast and easy installation.
- Extends tool lifetime.



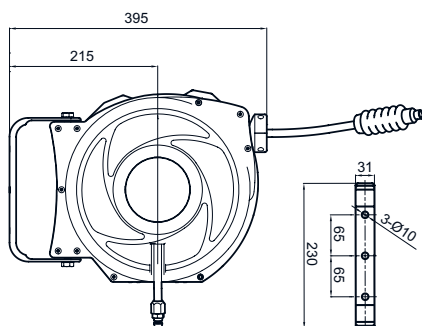
Model	Max air flow	Hose	Coupling	Lubrication	Ordering No.
For small screwdrivers and small drills with 1/8" BSP air inlet					
MIDI Optimizer F/RD EQ08-C06-1/8	6 l/s	Cablair 6 mm	ErgoQIC 08	Yes	8202 0850 10
MIDI Optimizer F/R EQ08-C06-1/8	6 l/s	Cablair 6 mm	ErgoQIC 08	No	8202 0850 19
For small screwdrivers and small drills with 1/4" BSP air inlet					
MIDI Optimizer F/RD EQ08-C06	6 l/s	Cablair 6 mm	ErgoQIC 08	Yes	8202 0850 06
For screwdrivers, small impacts and drills with 1/4" BSP air inlet					
MIDI Optimizer F/RD EQ08-C08	9 l/s	Cablair 8 mm	ErgoQIC 08	Yes	8202 0850 00
MIDI Optimizer F/R EQ08-C08	9 l/s	Cablair 8 mm	ErgoQIC 08	No	8202 0850 01
For 1/2" impact wrenches, pulse tools, drills and small nutrunners with 3/8" BSP air inlet					
MIDI Optimizer F/RD EQ08-C10	16 l/s	Cablair 10 mm	ErgoQIC 08	Yes	8202 0850 07
For 1/2" impact wrenches, pulse tools and small nutrunners with 1/4" BSP air inlet					
MIDI Optimizer F/RD EQ08-C10	16 l/s	Cablair 10 mm	ErgoQIC 08	Yes	8202 0850 03
MIDI Optimizer F/RD EQ10-R10	16 l/s	Rubair 10 mm	ErgoQIC 10	Yes	8202 0850 16
For percussive tools and grinders with 3/8" BSP air inlet incl. whiphose					
MIDI Optimizer F/RD EQ10-R13-W	23 l/s	Rubair 13 mm	ErgoQIC 10	Yes	8202 0850 14
For percussive tools and grinders, incl. whiphose, no tool nipple included					
MIDI Optimizer F/RD EQ10-R13-W	23 l/s	Rubair 13 mm	ErgoQIC 10	Yes	8202 0850 15
For impact wrenches, pulse tools, drills and nutrunners with 3/8" BSP air inlet					
MIDI Optimizer F/RD EQ10-C13	23 l/s	Cablair 13 mm	ErgoQIC 10	Yes	8202 0850 02
For impacts, pulse tools, drills and nutrunners with 1/4" BSP air inlet					
MIDI Optimizer F/RD EQ10-C13-1/4	23 l/s	Cablair 13 mm	ErgoQIC 10	Yes	8202 0850 11
For grinders, impacts and nutrunners with 3/8" BSP air inlet					
MIDI Optimizer F/RD EQ10-T13	35 l/s	Turbo 13 mm	ErgoQIC 10	Yes	8202 0850 17
For grinders, impacts and nutrunners with 1/2" BSP air inlet					
MIDI Optimizer F/R EQ10-T13	35 l/s	Turbo 13 mm	ErgoQIC 10	No	8202 0850 04
MIDI Optimizer F/RD EQ10-T13	35 l/s	Turbo 13 mm	ErgoQIC 10	Yes	8202 0850 13
For grinders with 1/2" BSP air inlet					
MIDI Optimizer F/RD EQ10-T16	40 l/s	Turbo 16 mm	ErgoQIC 10	Yes	8202 0850 12
For large Turbo grinders with 1/2" BSP air inlet					
MAXI F/R C-T16	60 l/s	Turbo 16 mm	Claw	No	8202 0850 05
For large Turbo grinders with 1/2" BSP air inlet					
MAXI F/RD C-T20	65 l/s	Turbo 20 mm	Claw	No	8202 0850 20

HM LIGHT

The HM Light has a composite casing and a highly wear and oil resistant PUR hose. The HM Light hose reel is recommended for small screwdrivers and small pulse tools.

- Revolving hinge for flexible use.
- Light and compact.
- Kink resistant PUR-hose.
- Working temperature: -30°C - +60°C.
- Max working pressure is 20 bar.
- Inlet hose length: 0.9 m.

Dimensions



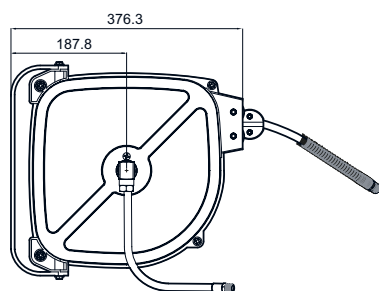
Model	Length m	Hose	Hose inside dia		Connection inlet BSP male	Connection distribution hose BSP male	Air flow l/s	Weight kg	Ordering No.
			mm	in					
HM LIGHT	8	PUR	8	5/16	1/4"	1/4"	10	4.5	8202 1180 92
HM LIGHT	10	PUR	8	5/16	1/4"	1/4"	9	4.5	8202 1180 91

HM FLEX

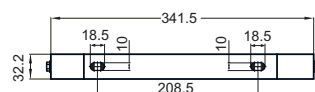
The HM FLEX has a high quality, compact steel casing and is recommended for small and medium screwdrivers, small and medium pulse tools, small drills, impact wrenches up to 1/2" size, small grinders and riveting and chipping hammers.

- HM FLEX Grinding with spatter resistant rubber hose.
- Revolving hinge for flexible use.
- Strong and durable.
- Working temperature: -30°C - +60°C.
- Max working pressure: 20 bar.
- Inlet hose length: 1.5 m.

Dimensions



Model	Length m	Hose	Hose inside dia		Connection inlet BSP male	Connection distribution hose BSP male	Air flow l/s	Weight kg	Ordering No.
			mm	in					
HM FLEX Grinding	8	Rubber	8	5/16	1/4"	1/4"	9	8.5	8202 1181 02
HM FLEX	10	PUR	10	3/8"	1/4"	1/4"	14	8.5	8202 1181 00



HM OPEN FLEX

Hose reels in the HM Open Flex series have an open steel casing and 10 mm or 13 mm hose. HM Open Flex hose reels are recommended for screwdrivers, impact wrenches, pulse tools, drills, chipping and riveting hammers and grinders up to 1000 W.

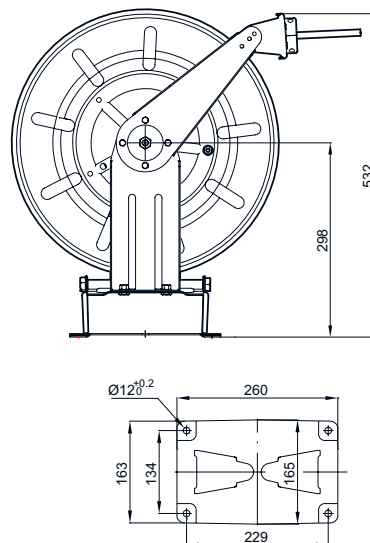
- Kink resistant PUR hose or spatter resistant rubber hose.
- Floor, wall or ceiling mounting.
- Revolving hinge for flexible use.
- Working temperature: -30°C - +60°C.
- Max working pressure: 20 bar.
- Inlet hose length: 1.5 m.



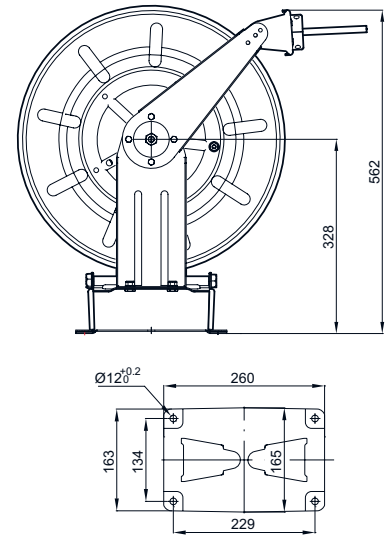
Model	Length m	Hose	Hose inside dia		Connection inlet BSP male	Connection distribution hose BSP male	Air flow l/s	Weight kg	Ordering No.
			mm	in					
HM OPEN FLEX	10	PUR	10	3/8	1/4	1/4	12	10.5	8202 1181 12
HM OPEN FLEX	15	PUR	10	3/8	1/4	1/4	8	11	8202 1181 10
HM OPEN FLEX	15	Rubber	10	3/8	1/4	1/4	8	11	8202 1181 09
HM OPEN FLEX L	10	PUR	13	1/2	1/2	1/2	16	13	8202 1181 22
HM OPEN FLEX L	15	PUR	13	1/2	1/2	1/2	14	14	8202 1181 20
HM OPEN FLEX L	15	Rubber	13	1/2	1/2	1/2	14	14	8202 1181 14

Dimensions

HM OPEN FLEX



HM OPEN FLEX L



Hose Reels

HM Flex L, HM Turbo, HM XL

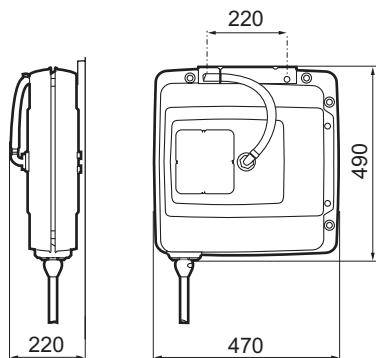
HM FLEX L

The HM FLEX L, with a steel casing and high quality rubber hose, handles both air and water. The HM FLEX L is recommended for all screwdrivers, pulse tools, impact wrenches, drills, chipping tools and riveting hammers and grinders up to 1000 W.

- NBR rubber hose.
- Movable brackets for floor, wall and ceiling mounting.
- High flow capacity.
- Working temperature: -30°C - +60°C.
- Max working pressure is 15 bar.
- Inlet hose length: 1 m.



Dimensions



Model	Length m	Hose	Hose inside dia		Connection inlet BSP male	Connection distribution hose BSP male		Air flow l/s	Weight kg	Ordering No.
			mm	in						
HM FLEX L	10	Rubber	12.5	1/2"	1/2"	1/2"		22	16	8202 1181 56

HM TURBO and HM XL

The HM Turbo and HM XL have an open steel casing with 20 mm Turbo hose or 25 mm rubber hose. The HM Turbo and HM XL are recommended for use with high powered grinders.

- Spatter resistant hoses.
- Extremely high flow capacity.
- Floor, wall or ceiling mounting.
- Revolving hinge for flexible use.
- Working temperature: -30°C - +60°C.
- Max working pressure: 20 bar.
- No hose, inlet coupling on casing.



Dimensions

Model	L	H	W
HM TURBO	660	765	340

Model	Length m	Hose	Hose inside dia		Connection inlet BSP male	Connection distribution hose BSP male		Air flow l/s	Weight kg	Ordering No.
			mm	in						
HM Turbo	20	TURBO	20	3/4"	3/4"	No thread		50	42	8202 1181 30
HM XL	15	Rubber	25	1"	1"	No thread		60	42	8202 1181 33

Hose reel balancer – HRIL

Models in the HRIL range of hose reel balancers are specifically designed for use with small pneumatic hand tools.

The integrated air hose and support cable ensure the work area is kept tidy and the tool is easy to control.

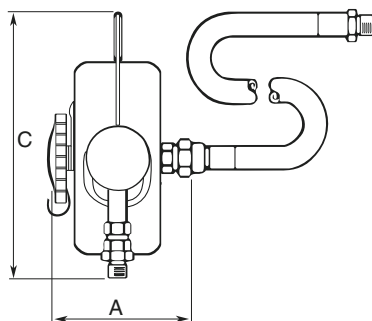
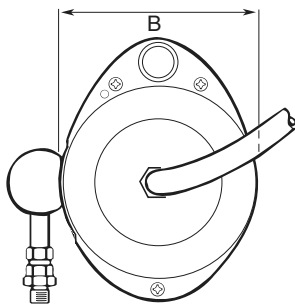
- Ergonomics – The retraction force over hose travel remains almost constant which minimizes load on the operator and ensures smooth operation.
- An easily adjusted rubber stop is fitted on the hose which allows the tool to be set at the optimum position.
- The retraction force is easily adjustable by means of a hand wheel on the rear casing (this can be removed if desired, once the retraction force is set).
- Long service life – The design features a rugged casing, self lubricating spindle bearing bushes and a 360 degrees rotary inlet connector.
- A durable hose is fitted with additional protection to prevent excessive bending around air connectors.
- Low pressure drop – The HRIL balancers have very good flow characteristics.



Model	Capacity range		Max rec. air flow ^a l/s	Hose travel m	Weight		Max working pressure bar	Dimensions			Ordering No.
	kg	lb			kg	lb		A	B	C	
HRIL 1	0.2-0.5	0.4-1.1	3.5	1.2	1.2	2.6	10	92	132	173	8202 0600 03
HRIL 3	0.5-1.4	1.1-3.1	5.5	1.0	1.2	2.6	10	92	132	173	8202 0600 11
HRIL 4	0.7-2.0	1.5-4.4	6.5	1.0	1.4	3.1	10	92	132	173	8202 0600 29

^a At inlet pressure of 6 bar pressure drop is 0.4 bar.

Dimensions



Air line fittings

All models have a BSP 1/4" inlet fitting.

HRIL 1 supplied with M5 and BSP 1/8" outlet fittings.

HRIL 3 supplied with BSP 1/8" and BSP 1/4" outlet fittings.

HRIL 4 supplied with BSP 1/4" outlet fitting.

Optional Accessories

Designation	Ordering No.
Conversion kit for air inlet from below, - HRIL 3, HRIL 4	4390 1687 90
Safety chain	4391 4045 90

Atlas Copco blow guns are a hard-wearing, user-friendly solution for all cleaning applications. Their plastic bodies offer flexibility in handling for both right and left-handed users, insulate against cold and reduce the risk of scratches to work surfaces. Both blow guns have excellent throttling properties allowing easy regulation of the air flow.

ErgoGUN B2602

The ErgoGUN B2602 is available with two different nozzles. ErgoGUN B2602 with star-tip nozzle with silencing effect and ErgoGUN B2602-HF for high flow demands.

- Ergonomic handle
- Lightweight design
- Exchangeable tubes
- High blowing force

GUN

The Atlas Copco blow gun GUN is available in three different models. GUN F06A for high flow demands, GUN F06A-S with safety nozzle and GUN F06A-SS with a combined safety/silencer nozzle with silencing effect.

- Strong and durable
- Easily regulated flow
- Exchangeable nozzles



Model	Max working pressure bar	Max working temperature °C	Blow force N	Air flow l/s	Weight		Air inlet thread BSP	Ordering No.
					kg	lb		
GUN F06A-SS, safety/silencer nozzle	10	+50	2	3.8	0.16	0.35	1/4"	8202 1005 69
GUN F06A-S, safety nozzle	10	+50	4	7.0	0.15	0.33	1/4"	8202 1005 51
GUN F06A	10	+50	4	7.0	0.14	0.31	1/4"	8202 1005 28
ErgoGUN 2602, star-tip	16	+60	2.2	3.1	0.11	0.25	1/4"	8202 1006 10
ErgoGUN 2602-HF, high flow	16	+60	4.3	8.5	0.11	0.25	1/4"	8202 1006 11

Optional Accessories

For GUN F06

	Ordering No.
Transparent guard	9090 1886 90
Holder for suspension	9090 1808 80
Hose nipple	9000 0241 00
Safety/Silencer nozzle	9090 1809 81
Safety nozzle	9090 1809 80



Transparent guard



Holder for suspension

For ErgoGUN F06

	Ordering No.
Extension tube	
HF 300 mm, 6.3 l/s	8202 1006 30
HF 500 mm, 6.3 l/s	8202 1006 31

Test Equipment

Air tool simulator

In order to check whether the pressure or the flow is sufficient the air tool simulator can be connected instead of the tool. The simulator is delivered with different connections.

Ordering No. 4145 0698 81.



Pressure control unit

The unit consists of a high quality pressure gauge and the necessary couplings for checking the air pressure at the air inlet of the machine.

Ordering No. 4145 0699 81.



Air leakage detector

The air leakage detector is used to find leaks (e.g. in compressed air installations, vacuum installations, etc.) It works by "listening" on a frequency band normally containing no interference and non-audible for humans (>20kHz). Leaking compressed air or electrical flashover (sparks) generate, e.g. ultrasonic sound.

The equipment is delivered in a suitcase and consists of: Detecting device, headphone set and directional probe.

Ordering No. 8202 9002 00.

