

Atlas Copco Turbo Grinders

Truly dazzling performance!



Atlas Copco

TURBO GRINDERS AND SANDERS

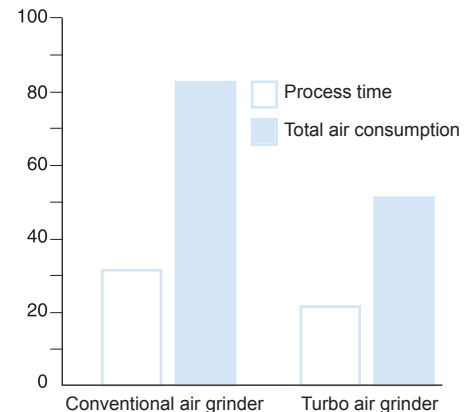
Twice the power. Half the weight. The Turbo grinder gives you twice the power of today's 5", 7" and 9" angle grinders. It is about half the size and weight of high frequency tools with comparable power.

- **High material removal** – The Turbo is powerful and keeps on working at high rotational speed. It gives a higher rate of cutting-off or material removal, with low wheel consumption.
- **Power for efficiency** – The Turbo is driven by a turbine motor, providing power-to-weight ratios never before achieved in grinders. This means you can choose a lighter, more compact tool for ease of use and good accessibility without sacrificing any of the power.
- **Long service life** – The turbine means there are no vanes to slide against the cylinder. The gear runs in oil in a housing with patented seals. The result is consistent performance and interruption free operation.
- **Minimized vibrations** – on the Turbo, vibration has been cut to below 2.5 m/s². This has been achieved by an entirely new vibration-damping technique, Auto Balancing, in which a set of bearing balls is used to counterbalance the imbalance in the wheel.
- **Lubrication-free** – The unique turbine drive in the Turbo means that the motor doesn't need oil in the air for lubrication. This provides several benefits from the points of views of working environment, quality and productivity.
- **Dust extraction** – Efficient accessory and standard model for extraction of air-borne dust in sanding applications with fibre discs.

GTG21 is the latest of the Turbo grinders. It is the best choice for rough grinding and sanding applications.



MORE EFFECTIVE



The turbine motor is more efficient than a conventional grinder motor. Therefore it takes less time to do the same job. Also the total air consumption will be a lot less for a specific job.

Model	Max free speed r/min	For wheel dia mm	Max output		Weight		Height over spindle		Air consumption at max output				Rec. hose size		Air inlet thread	Sound level at free speed	Ordering No.
			kW	hp	kg	lb	mm	in	l/s	cfm	l/s	cfm	mm	in	BSP	dB(A)	
For grinding and cutting																	
GTG21 F120-13	12000	125	2.1	2.8	1.8	3.9	68	2.7	30	64	10	21	13	1/2	3/8	76	8423 2963 00*
GTG21 F085-18	8500	180	2.1	2.8	2.0	4.2	72	2.8	30	64	10	21	13	1/2	3/8	76	8423 2963 02*
For sanding																	
GTG21 S085 ^a	8500	180	2.1	2.8	1.6	3.5	80	3.1	30	64	10	21	13	1/2	3/8	76	8423 2963 05*
GTG21 S085 M14	8500	180	2.1	2.8	1.6	3.5	80	3.1	30	64	10	21	13	1/2	3/8	76	8423 2963 07
GTG 21 D120	12000	180	2.1	2.8	1.6	3.5	92	3.6	30	64	10	21	13	1/2	3/8	76	8423 0800 00*
GTG 21 D085	8500	180	2.1	2.8	1.6	3.5	92	3.6	30	64	10	21	13	1/2	3/8	76	8423 0800 01*

^a UNC 5/8"-11 spindle.

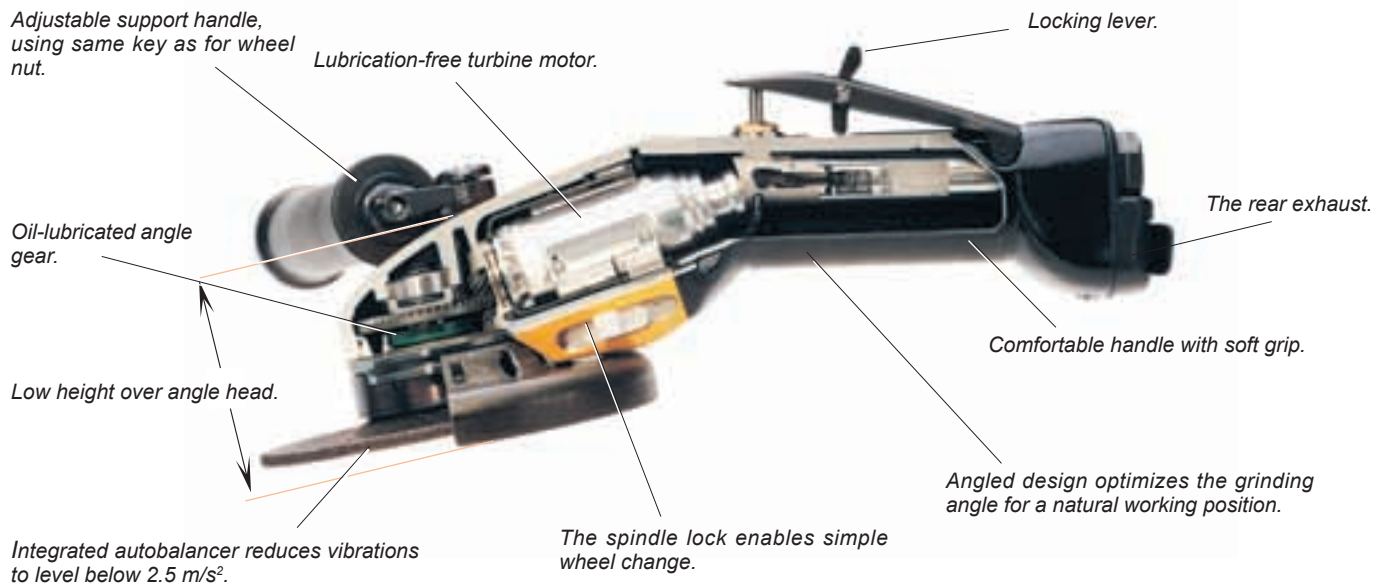
Flow requirement 250 m³/h.

-D prepared for accessories for spot suction kit.

* Available directly from stock.

TURBO GRINDERS AND SANDERS

Compact, powerful and efficient



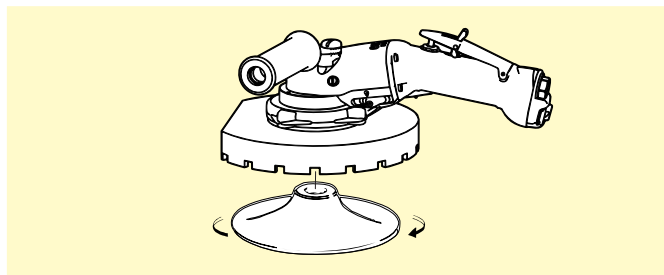
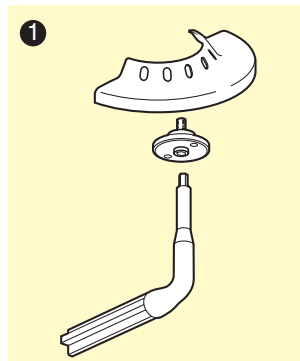
ACCESSORIES INCLUDED

All models

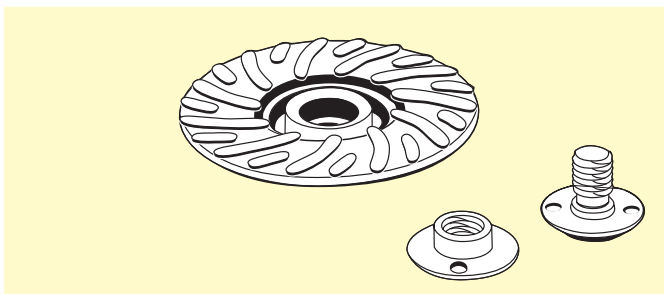
Adjustable support handle
Whip hose 0.7 m long, 13 mm dia complete with nipple and ErgoNIP 10
Gear box oil, one tube

① GTG21 F120/F085

Adjustable wheel guard
Attachment flanges for 1-10 mm thick grinding wheels
Hex key for wheel change



Spot suction kit (ex. sanding fiber disc)



Spindle adapter kit

OPTIONAL ACCESSORIES

Air hose set for maximum performance	Ordering No.
RUBAIR 13, L=5 m, incl ErgoNIP 10, ErgoQIC 10	8202 1180 22
Air preparation unit, incl MIDI F/R, ball valve ErgoQIC 10	8202 0845 48
TURBO 16, L=10 m, incl ErgoNIP 10, ErgoQIC 10	8202 1180 46

Spot suction kit for GTG21 D120 and GTG21 D085

Model	Ordering No.	
	Dia 125 mm	Dia 180 mm
Grinding depressed centre wheel		
GTG21 D120	3780 4090 23	
GTG21 D085		3780 4090 21
Sanding fiber disc		
GTG21 D120	3780 4090 24	
GTG21 D085	3780 4090 24	3780 4090 26
Cutting GRP with diamond disc		
GTG21 D120	3780 4090 25	
GTG21 D085		3780 4090 22
Diamond disc	3780 5074 61	3780 5074 62

Spindle adapter kit for sanding

Sanding kit for	Support pad dia mm	Ordering No.	
		5/8"	M14
GTG21 F120-13	120	4175 0883 92	4175 0883 93
GTG21 F085-18	162	4175 0883 90	4175 0883 91
Adapter ^a		4175 0883 04	4175 0883 03
Nut ^a		4175 0893 00	4175 0893 02

^a Included in the kit.



SERVICE KIT

4081 0220 90

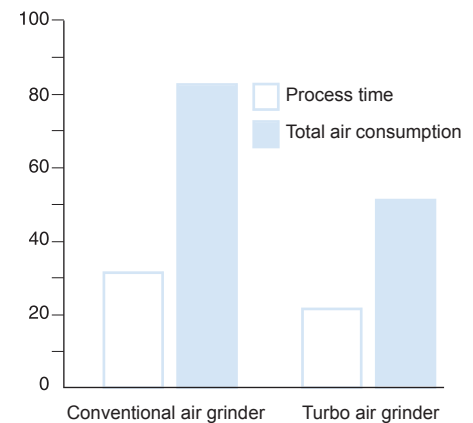
TURBO GRINDERS

The GTG/GTR40 are the most powerful grinders in the Turbo grinder range, with incredible power for their size and weight. The range includes angle and straight type grinders for virtually every common rough grinding application.

- **GTG40 F** – for rough grinding and cutting off with depressed centre wheels.
- **GTG40 S** – for surface finishing with coated abrasives and wire brushes.
- **GTG40 C** – for rough grinding with cup wheels.
- **GTR40** – for rough grinding and applications such as internal and external cleaning of castings with straight grinding wheels.
- **Dust extraction** – Efficient accessory and standard model for extraction of air-borne dust in sanding applications with fibre discs.



MORE EFFECTIVE



The turbine motor is more efficient than a conventional grinder motor. Therefore it takes less time to do the same job. Also the total air consumption will be a lot less for a specific job.

Model	Max free speed r/min	For wheel dia mm	Max output		Weight		Height over spindle		Air consumption at				Rec. hose size		Air inlet thread BSP	Sound level at free speed dB(A)	Ordering No.
			kW	hp	kg	lb	mm	in	max output l/s	free speed cfm	l/s	cfm	mm	in			
For grinding and cutting																	
GTG40 F085-18	8500	180	4.5	6.1	3.8	8.4	128	5.0	60	126	20	42	16	5/8	1/2	85	8423 2900 10*
GTG40 F066-23	6600	230	4.5	6.1	4.0	8.8	128	5.0	60	126	20	42	16	5/8	1/2	85	8423 2910 10*
For wire brush and sanding																	
GTG40 S060	6000	140 ^a	4.5	6.1	3.6	7.9	132	5.2	60	126	20	42	16	5/8	1/2	85	8423 2930 00*
For cup wheel																	
GTG40 S060-C15 ^b	6000	150	4.5	6.1	4.3	10.5	126	5.0	60	126	20	42	16	5/8	1/2	85	8423 2930 10*

^a For wire brush, Ø 230 mm for fibre disc.

^b Spindle thread: UNC 5/8". Length 23.5 mm.

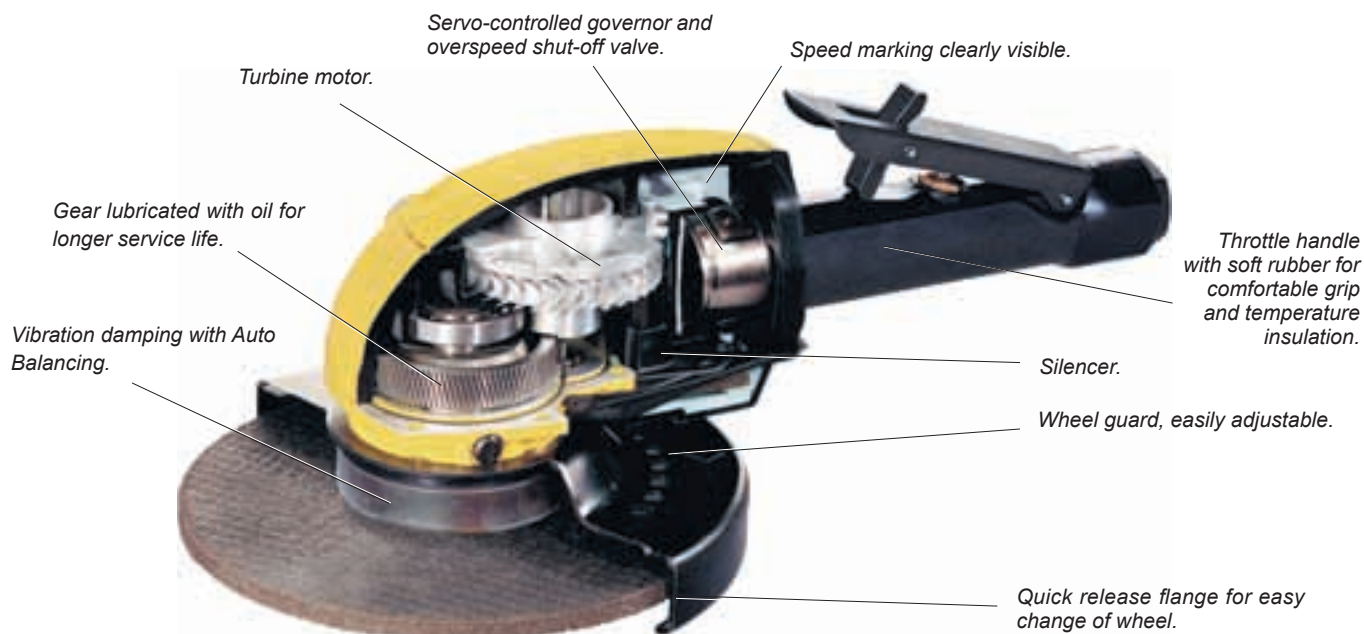
Model	Max free speed r/min	For wheel dia DxTxH ^a mm	Spindle thread	Max output		Weight		Length mm	Air consumption at				Rec. hose size		Air inlet thread BSP	Sound level at free speed dB(A)	Ordering No.
				kW	hp	kg	lb		max output	free speed	l/s	cfm	mm	in			
GTR40 S085-15	8500	150x25x25	UNC 5/8x11	4.5	6.1	5.6	12.3	563	60	126	20	42	16	5/8	1/2	85	8423 2950 00*
GTR40 S072-13	7200	125x25x25	UNC 5/8x11	4.5	6.1	5.6	12.3	563	60	126	20	42	16	5/8	1/2	85	8423 2951 00
GTR40 S060-15	6000	150x25x25	UNC 5/8x11	4.5	6.1	5.8	12.8	563	60	126	20	42	16	5/8	1/2	85	8423 2952 00*
GTR40 S060-20	6000	200x25x25	UNC 5/8x11	4.5	6.1	5.8	12.8	563	60	126	20	42	16	5/8	1/2	85	8423 2954 00

^a For straight wheels.

* Available directly from stock.

TURBO GRINDERS

Twice the power. Half the weight



ACCESSORIES INCLUDED – GTG40

Adjustable wheel guard
Support handle
Attachments flanges for 1.5-7 mm thick cut-off wheels and 2.5-8 mm thick depressed centre wheels
Whip hose 0.7 m long, 16 mm dia complete with nipple and ErgoNIP 10
Gear box oil, one tube
Hex key for wheel change

1 OPTIONAL ACCESSORIES – GTG40

	Ordering No.
Wire brush Ø 140 mm	4170 0685 00
Wire brush attachment set	4170 0550 82
Heavy duty backing pad for sanding Ø 180 mm (7")	4170 1192 90
Ø 230 mm (9")	4170 1193 90
Hand shield	4175 0165 90
Adaptor for positioning support handle 120/135° between handles	4175 0164 90*
Dust extraction kit ^a for 180 mm fiber disc GTG40 S060	3780 4090 10
Hose kit including 1.8 m vacuum hose, Ø 38 mm and air hose Ø 13 mm	3780 2724 41
Friction plate complete	4175 0186 90
Attachment for cup wheel with plane hole	4175 0178 90
Modification kit for handle inclined 10°	4170 1157 93

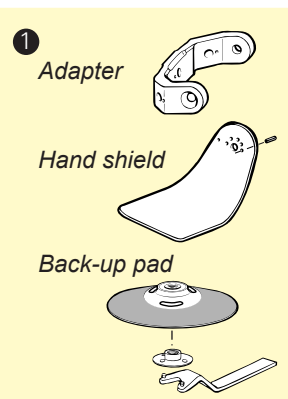
^a Incl flow chamber, suction cap and support pad.

* Included as standard in GTG40 S060-C15.



SERVICE KITS

GTG40	4081 0153 90
GTR40	4081 0153 91

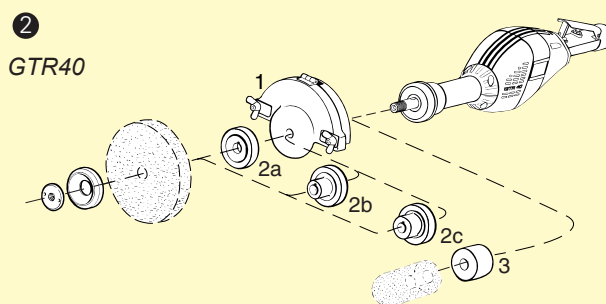


ACCESSORIES INCLUDED – GTR40

Wheel guard
Attachments flanges for grinding wheels 20-25 mm thick and with hole Ø 25 mm
Whip hose 0.7 m long, 16 mm dia complete with nipple and ErgoNIP 10
Gear box oil, one tube
Key and spanner for wheel change

2 OPTIONAL ACCESSORIES – GTR40

		Thickness x Hole dia mm		Ordering No.
2	Rear flange	TxH20-25x 16	2a	4150 0619 00
		x 20	2b	4150 1650 00
		x 32	2c	4150 0620 00
3	Spacer for cone wheel		3	4150 0787 00



OPTIONAL ACCESSORIES GTG40 and GTR40

Air hose sets for maximum performance

Air hose set	Length	Air pressure	Ordering No.
Fixed installation 5 m, Ø 16 mm			
TURBO 16/5 M/CLAW	5 m	<6 bar	8202 1181 95
Flexible installation 5 m, Ø 16 mm^b			
TURBO 16/5 M/EQ 10	5 m	>6 bar	8202 1181 80
Flexible installation 20 m, Ø 19 mm^b			
TURBO 20/20 M/EQ 10	20 m	>6 bar	8202 1181 75
Air preparation unit, including MAXI F/R 25 with ball valve and claw coupling			8202 0845 74

^b Whip hose 0.5 m included as standard in GTG/GTR40.

STRAIGHT GRINDERS

For cone wheels and collet

Internal grinding of holes and cavities in castings, etc require rough abrasives, which must be attached to the tool with a rigid shank or be mounted directly to the spindle.

- **Outstanding power and ergonomics** – The LSR48 provides you with extremely high power for internal grinding. The autobalancer reduces vibrations to a minimum. The tool is also equipped with an overspeed shut-off device.
- **Rigid and powerful** – The LSR range gives you maximum power for rough internal grinding tasks.
- **Built-in ergonomics for operator comfort** – Lighter jobs are successfully handled with LSR28/38. These light, handy tools offer low sound and vibration levels and will spare your operators.
- **Lubrication-free** – The LSR38 and LSR48 models are lubrication-free.



Model	Max free speed r/min	Max output		Weight		Length	Air consumption at				Rec. hose size		Air inlet thread BSP	Sound level at free speed dB(A) ³	Ordering No.	
							max output		free speed							
							kg	lb	mm	l/s						cfm
Straight grinders																
LSR28 S120-CW	12000	0.66	0.88	1.2	2.6	305	15.8	33.5	4.3	8.6	13	3/8	3/8	65	8423 1325 05	
LSR28 S150-CW	15000	0.70	0.94	1.2	2.6	308	18.0	38.2	5.8	12.3	13	3/8	3/8	72	8423 1325 06	
LSR38 S150-CW	15000	1.25	1.7	1.5	3.3	320	24	50	13	27	13	3/8	3/8	80	8423 1232 31*	
LSR38 S180-CW	18000	1.35	1.8	1.5	3.3	320	28	58	15	31	13	3/8	3/8	81	8423 1232 30*	
LSR43 S150-30	15000	1.0	1.3	2.0	4.4	438	23	49	10	21	13	1/2	1/2	87	8423 1432 32*	
LSR43 S150-30C	15000	1.0	1.3	2.1	4.6	503	23	49	10	21	13	1/2	1/2	87	8423 1432 33*	
LSR43 S120-30	12000	0.9	1.2	2.0	4.4	438	20	42	7	15	13	1/2	1/2	84	8423 1432 24*	
LSR43 S090-30	9000	0.8	1.1	2.0	4.4	438	18	38	5	11	13	1/2	1/2	81	8423 1432 57*	
LSR43 S072-30	7200	0.8	1.1	2.0	4.4	438	17	36	4	8	13	1/2	1/2	80	8423 1432 40*	
LSR48 S150-CW	15000	2.0	2.7	2.3	5.0	447	35	74	19	40	16	5/8	1/2	84	8423 1430 08*	
LSR48 S120-CW	12000	1.8	2.4	2.3	5.0	447	30	64	13	27	16	5/8	1/2	82	8423 1430 05*	
LSR48 S090-CW	9000	1.5	2.0	2.3	5.0	447	28	59	11	23	16	5/8	1/2	82	8423 1430 03*	

^a LSR28/38 measured with exhaust hose (incl. accessories).

* Available directly from stock.

LSR28/38 CW indicates use for cone wheel or collet, thread M12x1 to be combined with adaptor for wheel thread. LSR48 has UNC 1/2 spindle for direct attachment of CW. For 5/8 and collet use adaptor, see page for accessories.

STRAIGHT GRINDERS

Accessories for cone wheels and collet

ACCESSORIES INCLUDED

LSR28/38 CW versions

Air hose nipple and clamp
Exhaust hose
Wrenches
Whip hose (28)

LSR48 CW versions

Whip hose
Open end spanner

OPTIONAL ACCESSORIES

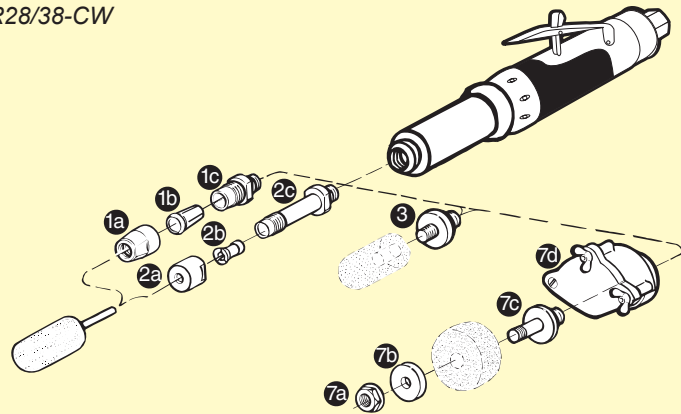
1 2 LSR28/38 CW

		Ordering No.
1a	Nut	4150 0849 00
1b	Collet dia	6 mm 4150 1453 00
		8 4150 0706 00
		9 4150 0765 00
		10 4150 0681 00
		1/4" 4150 1754 00
1c	Holder	4150 0680 00
2a	Nut	4150 0221 00
2b	Collet	6 mm 4150 0222 00
		8 mm 4150 0325 00
		1/4" 4150 0223 00
2c	Extended holder	4150 0441 00
	Short holder	4150 0211 00

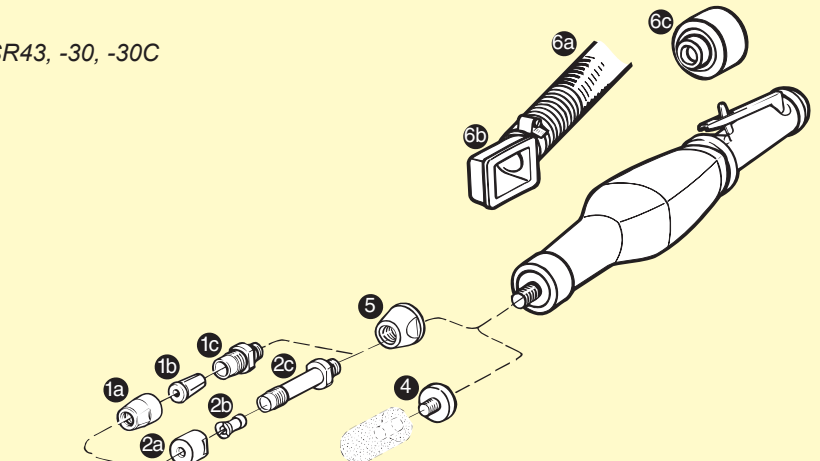
1 5 LSR48 CW

		Ordering No.
1a	Nut	4150 0849 00
1b	Collet dia	6 mm 4150 1453 00
		8 4150 0706 00
		9 4150 0765 00
		10 4150 0681 00
		1/4" 4150 1754 00
5	Holder	4150 0680 01

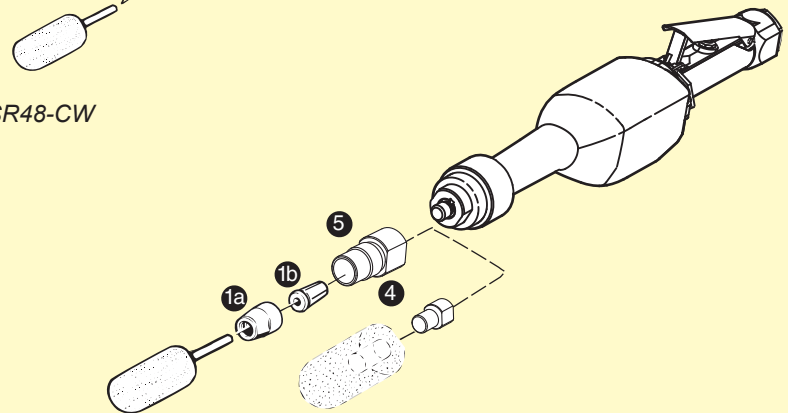
LSR28/38-CW



LSR43, -30, -30C



LSR48-CW



3 4 Adapter for cone wheel

Thread	3 LSR28/38 CW Ordering No.	4 LSR48 CW Ordering No.	4 LSR43 -30 Ordering No.
UNC/W 3/8"	4150 0318 00	—	4150 0943 00
UNF 3/8"	4150 0318 01	—	4150 0943 01
UNC 1/2"	4150 1357 00	—	4150 0944 00
UNC/W 5/8"	4150 0767 00	4150 0945 01	4150 0945 00

5 Adapter for LSR43 S072-30, -S090-30, -S120-30, -S150-30

	Ordering No.
Adapter	4150 0861 00

6 Silencer/lubricator for LSR43

6a Silencer	6b Adapter for silencer	6c Lubricator
4150 1005 80	4150 0938 80	4150 1405 80

7 Assembly parts for alternative straight wheel dimensions for LSR 28/38 CW

Wheel dimension	Ordering No.			
DxTxH	7a Nut	7b Flange	7c Holder	7d Wheel guard
50x19x10	0266 2111 00	4106 5938 00	4150 0212 00	4150 1299 81
50x13x10	0266 2111 00	4106 5938 00	4150 1145 00	4150 1299 81



SERVICE KITS

28 series	4081 0315 90
38 series	4081 0311 90
43 series	4081 0020 90
48 series	4081 2023 90

STRAIGHT GRINDERS

For straight wheels

High rate of material removal in open spaces is achieved with a straight grinder equipped with a straight sided wheel.

- **Rigid and powerful for best productivity** – The LSR48 and 64 series are sturdy and powerful enough for the roughest conditions. The length of these grinders can preferably be used as a lever for higher feed force. The LSR48 provide minimal vibration levels thanks to the autobalancer and is equipped with an over speed shut of devise.
- **Built-in ergonomics for working comfort** – Smaller jobs for straight sided wheels suit the LSR28 series well. Low sound and vibration levels, thermally insulated throttle handle and piped-away exhaust air are product features to spare the operator.
- **GTR straight turbo grinder**, see page 184.



Model	Max free speed r/min	For wheel dia. DxTxH ^a mm	Spindle thread	Max output		Weight		Length mm	Air consumption at				Rec.		Air inlet thread BSP	Sound level at free speed dB(A) ^b	Ordering No.
				kW	hp	kg	lb		max output		free speed		hose size				
									l/s	cfm	l/s	cfm	mm	in			
Straight grinders																	
LSR28 S180-05	18000	50x13x10	UNC 3/8x42	0.82	1.09	1.86	4.09	340	19.8	42.0	7.3	15.5	13	3/8	1/2	76	8423 1325 04
LSR28 S150-10	15000	100x13x20	UNC 1/2x42	0.70	0.94	2.16	4.75	340	18.0	38.2	5.8	12.3	13	3/8	1/2	67	8423 1325 02
LSR28 S110-08	11000	80x13x10	UNC 3/8x42	0.62	0.83	1.9	4.18	340	15.8	33.5	3.6	7.6	13	3/8	1/2	67	8423 1325 03
LSR43 S150-10	15000	100x25x25	UNC 1/2x49	1.0	1.4	2.8	6.2	438	23	49	10	21	13	1/2	1/2	87	8423 1430 34
LSR43 S120-08	12000	80x25x13	UNC 1/2x49	0.9	1.2	2.5	5.5	438	20	42	7	15	13	1/2	1/2	84	8423 1430 26*
LSR43 S090-10	9000	100x25x13	UNC 1/2x49	0.8	1.1	2.4	5.3	438	18	38	5	11	13	1/2	1/2	81	8423 1430 18*
LSR48 S150-10	15000	100x25x16-25	UNC 5/8x42	2.0	2.7	3.5	7.7	482	35	74	19	40	16	5/8	1/2	84	8423 1430 07*
LSR48 S120-08 ^d	12000	80x25x13-25	UNC 1/2x37	1.8	2.4	3.0	6.6	495	30	64	13	28	16	5/8	1/2	80	8423 1430 04*
LSR48 S120-08R ^c	12000	80x25x13-25	UNC 1/2x37	1.8	2.4	3.1	6.8	478	30	64	13	28	16	5/8	1/2	80	8423 1431 04*
LSR48 S120-13	12000	125x25x16-25	UNC 5/8x42	1.8	2.4	3.6	7.9	482	30	64	13	28	16	5/8	1/2	80	8423 1430 06*
LSR48 S120-10	12000	100x32x16-25	UNC 5/8x49	1.8	2.4	3.5	7.7	489	30	64	13	28	16	5/8	1/2	80	8423 1430 09*
LSR48 S090-10 ^d	9000	100x25x13-25	UNC 1/2x37	1.5	2.0	3.2	7.0	495	28	59	11	23	16	5/8	1/2	84	8423 1430 02*
LSR48 S090-10R ^c	9000	100x25x13-25	UNC 1/2x37	1.5	2.0	3.3	7.2	478	28	59	11	23	16	5/8	1/2	84	8423 1431 02*
LSR64 S100-15	10000	150x25x25	UNC 5/8x55	2.9	4.0	5.8	2.8	535	53	112	26	55	16	1/2	5/8	88	8423 1640 55
LSR64 S072-13	7200	125x25x16	UNC 5/8x55	2.5	3.4	5.4	11.9	535	45	95	14	30	16	1/2	5/8	84	8423 1640 30
LSR64 S060-15	6000	150x25x16	UNC 5/8x55	2.3	3.1	5.4	11.9	535	41	87	11	23	16	1/2	5/8	82	8423 1640 22*

^a DxTxH = Diameter x Thickness x Hole.

^b LSR28 measured with exhaust hose (incl accessories). For LSR64 the sound level can be reduced 8-12 dB(A) by using a silencer (optional accessories).

^c LSR48 models marked with R requires reinforced grinding wheels according to safety norms.

^d LSR48 S120-08 and LSR48 S090-10 are equipped with closed wheel guard.

Model	Max free speed r/min	Spindle thread in x mm	Max output		Weight		Length mm	Air consumption at				Rec. hose size mm in		Air inlet thread BSP	Sound level at free speed dB(A) ^a	Ordering No.	
								max output	free speed	l/s	cfm						
			kW	hp	kg	lb		l/s	cfm	l/s	cfm						
Straight grinders for wire brushes																	
LSR28 ST070E-CW	7000	UNC 1/2 x 20	0.76	1.0	1.9	4.3	445	18.9	40.1	12.4	26.3	10	3/8	3/8	75	8423 1235 71	
LSR43 S072	7200	UNC 1/2 x 49	0.8	1.1	2.0	4.4	438	17	36	4	8	13	1/2	1/2	80	8423 1430 00	
LSR64 S041	4100	UNC 5/8 x 55	1.6	2.5	5.4	11.9	535	29	61	7	15	16	5/8	1/2	81	8423 1640 14*	

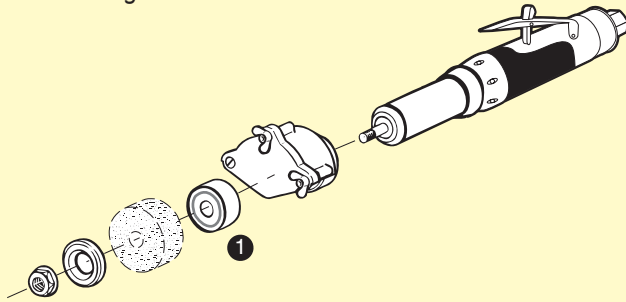
^a The sound level can be reduced 8-12 dB(A) by using a silencer (optional accessories).

* Available directly from stock.

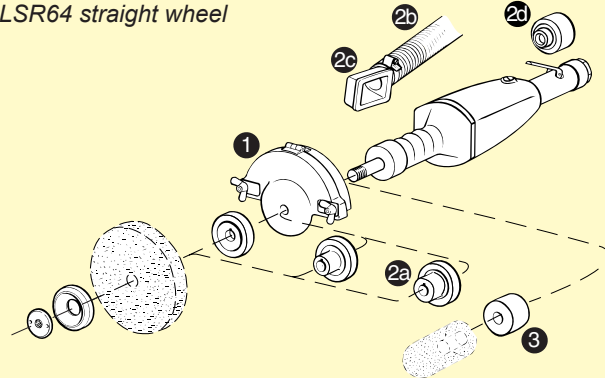
STRAIGHT GRINDERS

Accessories for straight wheels

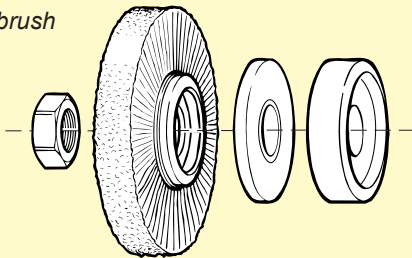
LSR28 straight wheel



LSR64 straight wheel



Radial wire brush



ACCESSORIES INCLUDED

1 LSR28

Wheel guard, size according to type
Nut, flanges
Air hose, air hose nipple and clamp
Exhaust hose
Wrenches

LSR48

Wiphose
Hook wrench
Pin key
Flanges, 1/2 spindle, H dia. 13/16/20/25 mm
5/8 spindle, H dia. 16/20/25 mm

LSR64

Wheel guard, size according to type
Nut, flanges
Air hose nipple and clamp
Wrenches

OPTIONAL ACCESSORIES

2 LSR64

Model		Ordering No.
2a	Flange TxH 25x32	4150 0620 00
2b	Silencer	4150 1006 80
2c	Exhaust guard	4150 0968 80
2d	Lubricator	4150 1405 80

3 Spacers for threaded cone wheels and plugs 5/8" thread

Model	LSR64 S100-15
3 Spacer	4150 0787 00

For wire brushes – Radial type for straight grinders

Model	Diameter mm	LSR28 ST070E	LSR64
Brush	100	4000 8771 00	–
Brush	150	–	4000 8764 01
Attachment set	–	4150 0318 85	4150 0619 80



SERVICE KITS

28 series 4081 0317 90 53 series 4081 0132 90
64 series 4081 0138 90 43 series 4081 0020 90
48 series 4081 2023 90

VERTICAL GRINDERS

For depressed centre, cut-off and cup wheels

Rough material removal and cutting-off requires lots of power. 180 mm and 230 mm depressed centre and cut-off wheels need the power of the Atlas Copco LSS series.

- **A grinder for every application** – The wide power and model range, from 1.4 to 3.8 kW provides a selection for any amount of material removal with depressed centre, cut-off or cup wheel.
- **Rigid and powerful for best productivity** – The LSS53/64/84 range is powerful and sturdy enough for the roughest grinding jobs. All LSS grinders have a nodular cast iron cylinder for longest service life.



Model	Max free speed r/min	For wheel dia mm	Spindle thread	Max output kW hp		Weight kg lb		Height over spindle mm	Air consumption at				Rec. hose size mm in		Air inlet thread BSP	Sound level at free speed dB(A)	Ordering No.
									max output		free speed						
									l/s	cfm	l/s	cfm					
Vertical grinders																	
LSS53 S120-13	12000	125	5/8	1.6	2.2	2.7	6.0	180	31	66	16	34	13	1/2	1/2	80	8423 2530 88*
LSS53 S085-18	8500	180	5/8	1.4	1.9	2.9	6.4	180	27	57	10	21	13	1/2	1/2	79	8423 2530 72*
LSS64 S085-18	8500	180	5/8	2.6	3.5	4.7	10.4	201	50	106	13	28	16	5/8	1/2	86	8423 2641 38*
LSS53 S072-C13 ^a	7200	125	5/8	1.3	1.8	3.1	6.8	180	26	55	8	17	13	1/2	1/2	77	8423 2534 12
LSS64 S060-C15 ^a	6000	150	5/8	2.2	3.0	5.0	11.0	201	40	85	9	19	16	5/8	1/2	82	8423 2641 04
LSS64 S060-23	6000	230	5/8	2.2	3.0	5.1	12.6	201	40	85	9	19	16	5/8	1/2	82	8423 2641 46*
LSS84 S060-23	6000	230	5/8	3.8	5.1	6.0	13.2	217	65	138	17	36	19	3/4	1/2	88	8423 2840 26*

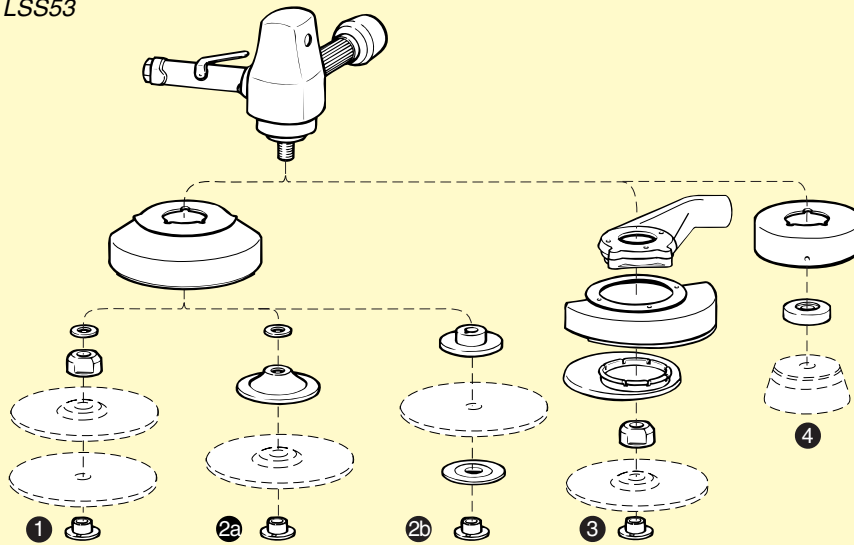
^a For cup wheel.

* Available directly from stock.

VERTICAL GRINDERS

Accessories for depressed centre, cut-off and cup wheels

LSS53



ACCESSORIES INCLUDED

1 Attachment according to EN 68

Wheel guard	
Flange	4170 0758 01
Nut	4170 0220 01
Wrenches	

OPTIONAL ACCESSORIES

2 Traditional flange assembly for all models

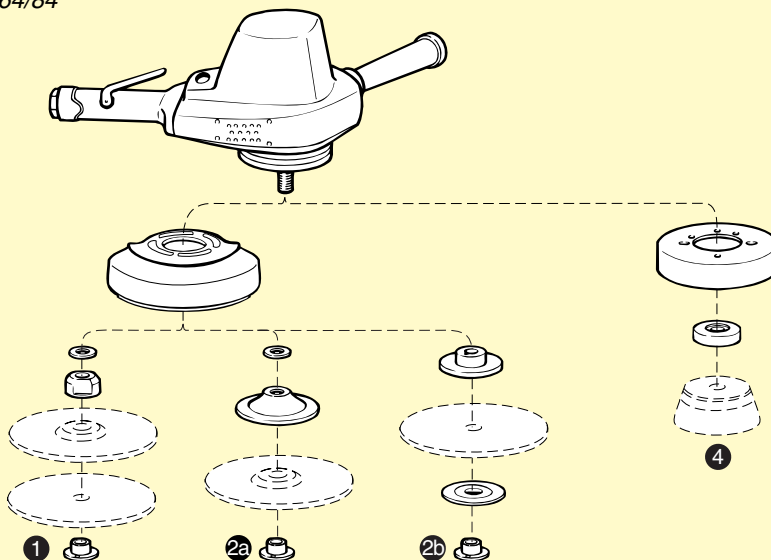
Rear flange
Outer flange
Nut
Pin wrench

Depressed centre wheel (2a) Ordering No.	Cut off wheel (2b) Ordering No.
4170 0219 87	4170 1133 87

3 Spot suction kit, see page 195

Flow chamber
Wheel guard 180 mm
Cap
Washer
EN 68 flange
Nut

LSS64/84



Model	Wheel dia mm	Ordering No.
LSS53 S085	180	3780 4011 10

4 For cup wheel

(incl in C13 and C15 models)

Wheel guard Ø 125 mm	4170 0664 80
Wheel guard Ø 150 mm	4170 0652 80
Flange	4170 1128 01



SERVICE KITS

LSS53	4081 0132 90
LSS64	4081 0133 90
LSS84	4081 0136 90

ANGLE GRINDERS

For depressed centre and cut-off wheels

Smooth, precise grinding with demands on accessibility will guide your choice to an angle grinder with depressed centre or cut-off wheel.

The span between LSV18 to LSV38 offers you the right size of tool between 80 to 125 mm diameter wheel respectively and power of 0.39 to 1.3 kW. All the grinders have sealed angle heads which avoids greasy nipples or oil leakage.

- **High productivity, good accessibility** – The speed governor keeps rotational speed close to free speed for a high material removal rate. The low angle head gives access to cramped spaces with increased productivity as the result.
- **Ergonomics** – Thermal isolation of handles, low sound and vibration levels as well as sealed angle heads make these tools the best for operator comfort.
- **LSV38** – A completely new angle grinder with impressive power, 1300 Watt, and a low weight for best productivity in the grinding application. The LSV38 is available in three different versions to suite different needs. The LSV38 ST and -SA -versions have a spindle lock for quick and easy change of grinding wheel. The position of the wheel guard on both models can be changed without tool for best accessibility. The LSV38 SA has an Autobalancer that reduces vibrations from the grinding process.



- **The LSV18** is lubrication free.
- **LSV38 ALU-Cut** – This is a new attachment in our range of accessories for material removal and cutting off operations in aluminium.

Model	Max free speed r/min	For wheel dia DxTxH ^a mm		Spindle thread	Max output		Weight		Height over spindle mm	Air consumption at				Rec. hose size		Air inlet thread BSP	Sound level at free speed dB(A) ^b	Ordering No.
					kW	hp	kg	lb		max output	free speed	l/s	cfm	mm	in			
LSV18 S170-08	17000	80x7x10	UNF 3/8"		0.45	0.6	0.7	1.55	71	11.2	23	6.6	14	10	3/8	1/4	76	8423 0111 10
LSV28 ST13-10E	13000	100x7x9.5	3/8		0.75	1.0	1.5	3.3	68	21.5	45	14.5	30	10	3/8	3/8	88	8423 0125 29*
LSV28 ST12-10	12000	100x7x16	3/8		0.75	1.0	1.7	3.7	80	17.4	36.9	7.5	15.9	10	3/8	3/8	75	8423 0125 14
LSV28 ST12-12	12000	115x7x22	3/8		0.75	1.0	1.7	0.0	80	17.4	36.9	7.5	15.9	10	3/8	3/8	75	8423 0125 16
LSV28 ST12-13	12000	125x7x22	3/8		0.75	1.0	1.7	0.0	80	17.4	36.9	7.5	15.9	10	3/8	3/8	75	8423 0125 17
LSV28 S060-18	6000	180°	5/8"-11		0.73	0.98	2.5	5.4	87	16	33.9	7.3	15.5	10	3/8	3/8	73	8423 0135 53
LSV38 S12-125	12000	125x7x22	M14		1.30	1.7	1.6	3.5	83	28	58	15	31	13	3/8	1/2	89	8423 0131 10*
LSV38 ST12-125	12000	125x7x22	M14		1.30	1.7	1.8	4.0	83	28	58	15	31	13	3/8	1/2	83	8423 0131 11*
LSV38 SA12-125	12000	125x7x22	M14		1.30	1.7	2.0	4.4	83	28	58	15	31	13	3/8	1/2	83	8423 0131 13*
LSV48 SA120-13	12000	125x7x22	M14		1.9	2.5	2.5	5.5	78	36	76	17	36	16	5/8	1/2	89	8423 0132 07*
LSV48 SA085-18	8500	180x7x22	M14		1.9	2.5	2.7	5.9	78	36	76	17	36	16	5/8	1/2	89	8423 0132 06*
LSV48 SA066-23	6600	230x7x22	5/8"-11		1.9	2.5	2.9	6.4	82	36	76	17	36	16	5/8	1/2	89	8423 0132 08*

^a DxTxH = Diameter x Thickness x Hole.

^b For LSV18/28/38 ST, -SA with exhaust hose.

^c Specially for flexible depressed centre wheel, see page 197.

SA = Autobalancer.

With wheel guard for disc

-08 = Ø 75 mm

-12 = Ø 115 mm

-13 = Ø 125 mm

-18 = Ø 180 mm

-23 = Ø 230 mm

* Available directly from stock.

ANGLE GRINDERS

Accessories for depressed centre and cut-off wheels

1 ACCESSORIES INCLUDED

LSV18

Wheel guard 80 mm
Flanges 4150 1158 80
Air Hose nipple, clamp
Wrenches
Exhaust hose set

LSV28

Wheel guard
Flanges 4150 1160 80
Support handle 4150 1521 80
Air hose, air hose nipple, clamp
Wrenches
Exhaust hose set

LSV38

Wheel guard (LSV38 S)
Adjustable wheel guard (LSV38 ST, -SA)
Wheel attachment flanges
Wrenches for flanges
Spindle lock (LSV38 ST, -SA)
Support handle (LSV38 ST, -SA)
Exhaust hose (LSV38 ST)
HD-type exhaust hose (LSV38 SA)
Autobalancer (LSV38 SA)
Whip hose Turbo 13 with ErgoNIP 10 (LSV38 SA)

LSV48

Wheel guard
Flange nut 4150 1160 02
Support handle 4175 0868 82

2 OPTIONAL ACCESSORIES

LSV28

Spot suction kit for depressed centre wheel 125 mm, see page 203.
Flow chamber
Wheel guard
Cap
Washer
EN 68 flange
Nut

Model	Ordering No.
LSV28 ST12-13	3780 4008 70

- 3 Parts for fitting flexible depressed centre wheel especially for LSV28 S060-18.
Backing pads and disc are available from abrasive suppliers. Wheel guard must be used (incl in LSV28 S060-18).

Adapter	Nut	Washer
For 5/8" spindle		
—	4170 0759 00	4170 0311 00
For 3/8" spindle		
4150 1159 00	4150 1410 00	—

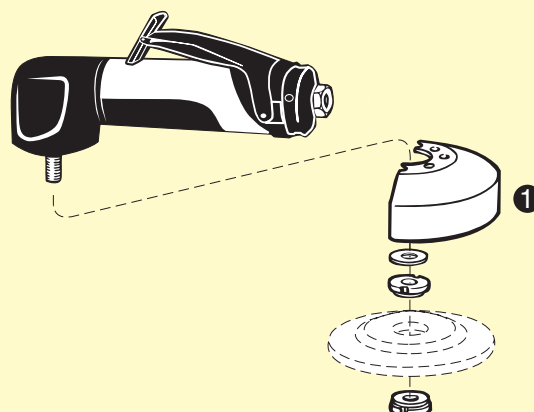
LSV48

Silencer	Ordering No.
LSV48	4150 2049 80

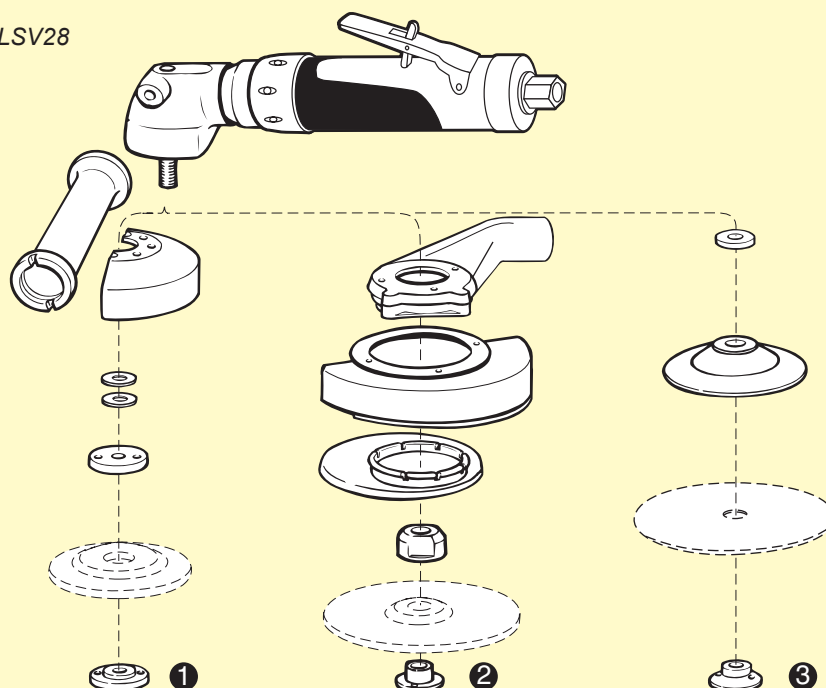
4 LSV38 Alu-Cut

Alu-Cut	Ordering No.
Guard kit	4112 1161 90
Carbide tipped cutter, dia 125 mm, t = 4 mm	4112 1162 00
t = 2 mm	4112 1164 00

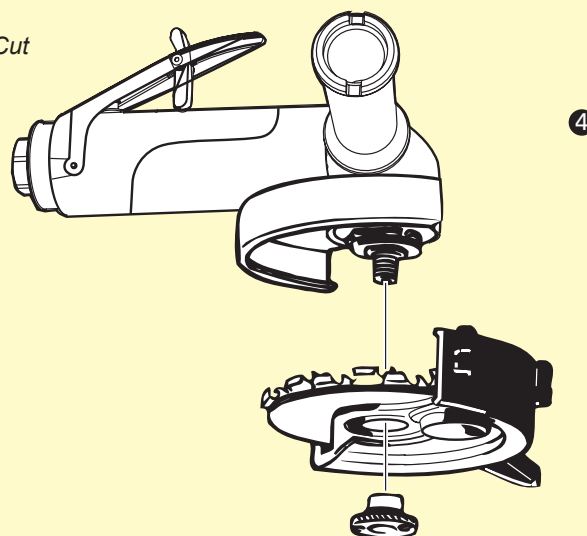
LSV18



LSV28



LSV38 ALU-Cut



SERVICE KITS

LSV18	4081 0355 90
LSV28	4081 0317 90
LSV38	4081 0309 90
LSV48	4081 0312 90